



max. **1984 lbs**  
Working Load Limit

max. **25 ft**  
Lifting Height

Optional  
**3 Drives:**  
AC, DC, M

**Wienold**  
Glass- and Material Lift

**GML800+**



The Norbert Wienold GmbH was founded in 1987 and is General Distributor in Germany for:



Whether material lifts, or work platforms, scissors or booms: we offer a large range of lifting technology to you for many operational areas - up to 180 ft. working height.

At our headquarter in Emsbüren in Germany we employ approx. 25 co-workers, who all work together with the colleagues at our national offices to ensure fast problem free completion of your enquiries and orders.



Our services include among other things, sales, rentals, spare part service and repairs, as well as machine examinations.

To adapt your Lifting equipment for individual needs and work inputs we also offer a wide accessory program to you.

In order to guarantee short term supplies, we have many lifts, workplatforms, spare parts and accessories in stock. Therefore your order reaches you within the shortest time.



We will also help you with enquires for completely special single solutions in the lifting technology as well as briefings and training courses for our machines.

Fell welcome, **we be glad to help.**

**Rental Stations in Germany:**

München | Frankfurt | Leverkusen | Walsrode | Brandenburg | Emsbüren



**Wienold GML800+ Star at Glass assembly in the world-famous cinema**

The new Wienold glass and Material Lift GML 800+, used by Hird & Sons Ltd., one of the most prestigious houses in the UK, had the leading role in assembling XXL glass panels at the Empire Cinema in Leicester Square in London - home of many world premieres.

The GML 800+, manufactured by Wienold lifts in Germany, is the result of a catalog by HIRD with technical requirements.

Task and goal was to develop a lift, which is easy to move especially for indoor conditions, while also achieving impressive payload. That the GML 800+ is the perfect result, was demonstrated during the assembly of the XXL-glass panels at Empire Cinema in a impressive way: the panel was 13.1 ft. wide, 8.2 ft. high with a weight of 772 lbs.

For mounting this glass panels, Hird, Kappel and Wienold developed a new 2-circuit vacuum lifter, which accommodates up to 1102 lbs working load limit, controlled by cable remote control. This means that overhead installation in conservatories and porches are made safely, quickly and easily.

HIRD Director John Wilding: "The GML 800+ was very demanding-fully designed and manufactured by Wienold in accordance to our specifications. The GML fulfilled all of our requirements.."



HIRD classifies the GML 800+ as popular lift, not only for use with the handling of glass. In many other areas, such as in the installation of heavy steel and concrete beams, wood frame etc., he will find his application.

At HIRD & Sons, the GML has become famous in the rental fleet after a short time. The requests increased so that Wienold received another order to double the Hird rental GML-fleet.

Further inquiries and orders from USA, Canada, Australia, New Zealand and Germany are showing that GML finds worldwide interest. More information about the GML 800+ is available on: [www.wienold-lifte.de](http://www.wienold-lifte.de).

Wienold is joining the Glassbuild in Las Vegas in September, showing the GML and a range of self constructed lifts, e.g. the Wienoldlift Universal Premium WLU-P, a versatile material lift especially constructed to work under restricted working area conditions..



20.-23.09.2016  
 Düsseldorf, Germany  
 Halle 11 | Stand 11-A15



19.-21.10.2016  
 Las Vegas, USA  
 Stand 468



16.-21.01.2017  
 München; Germany

# Wienold Glass- und Material Lift GML 800+

Powerful and versatile.



**GML 800+ M**  
with manual worm gear winch



**GML 800+ AC**  
with 230/110V electric winch



**GML 800+ DC**  
with 24V electric winch

The new **GML800+** lift series redefines the handling of heavy loads in a completely new way. The range offers unparalleled safe working loads for material lifts of this type.

The GML range brings the new development of an **electric drive system**. AC and DC models have a powerful electric winch that allows 1984 lbs to be lifted to a height of 11 ft. and up to 1763 lbs kg to a height of 25 ft. at the touch of a button.

The Manual (M) model range has identical lifting and reach capabilities to the powered range. The worm gear winch comes complete with an adjustable crank handle which, when extended fully enables heavier loads to be lifted more easily.

A truly amazing accessory that can be fitted to the Manual range as an optional extra is a 3 speed gearbox which can be operated with a cordless or mains operated drill. This totally eliminates the need for manual winding which saves both time and effort.

The GML800+ AC and DC are operated by a simple wander lead that is magnetised for storage on any steel part of the machine.

The battery pack and counterbalance weights on the DC machine are stored in a self contained trolley that ingeniously attaches to the stabilising legs of the GML800+ and comes complete with an integrated, self seeking charger.

On both the AC and DC models, the cable control system is designed to allow the operation of additional powered accessories such as the electric telescopic boom (ETB).

Another innovative feature of the GML range is the option of forklift pockets which become invaluable when transporting the machine around a building site, especially in operating position.

Electric winch AC and DC series



Manual worm gear winch M series



Optional: 3 speed gearbox for manual version





**Adjustable stabilisers as standard** for /20 und /25.  
Optional für for /10 and /15 models.



**Space-saving**  
Transport/storage position



**Practical: forklift pockets**  
available as an option.

In order for the machines to operate safely with the extra lifting capacities, the mast system of the popular SLK range has been extensively redesigned.

Not only has the mast extrusion been made stronger, the rollers are manufactured from hardened steel to ensure smooth movement and stability. All pulleys, bearings and the steel cable have been engineered for durability and longevity.

The GML series incorporates twin safety brakes and on the electric models, two limit switches are fitted. These switches deactivate the winch automatically when full extension or retraction is reached. The winch also stops if the cable tension is insufficient.

Wienold Lift's high standard of engineering and safety extends to all components of the GML800+ range. The chassis frame, stabilising legs and outriggers are all manufactured from 6mm thick steel. All GMLs are fitted with locking castors which can be locked for in-line steering.

All GMLs are fitted with locking castors which can be locked for in-line steering

The GML800+ series is unique in that the stabilising legs can be used not only in the front of the machine, but can easily be installed at the back (with counterweights).

This enables the unit to work directly up against a wall or glass façade etc ensuring the load centre remains close to the mast. In addition, with the legs to the back the unit becomes easier to manoeuvre.

The GML800+ is available with a range of electrically operated accessories such as vacuum lifters and an electrically operated telescopic boom which enables precision placement of materials when working on site.

Mast system with special profiles and bearings



Heavy duty rollers, cable and components



Safety brakes fitted on both sides



# Wienold Glass- und Material Lift GML 800+

Model Types.

## AC-Series:



**GML** stands for Glass and Material Lift. The number **800** describes the working load limit (WLL) of the model with the largest working height. The **+** sign indicates that models with a higher SWL are available.

**Example: GML800+ 20/K AC**

Further numbers and letters identify the exact type:

The numbers 10, 15, **20** or 25 give you the approximate working height in feet of each model. The letter **K** tells you that the lift is a counterweight model and **AC** stands for the mast system drive which is operated by a 230v/110V electric winch.

The illustrated **GML800+ /20 K AC** achieves a lifting height of 21 ft. It is supplied with adjustable stabilisers which are fitted as standard on the GML800+ 20 and 25 models.

The adjustable stabilisers provide a higher level of stability when working at greater heights and are available as an option on the GML800+ 10 and 15 models.

Adjustable forks are fitted as standard on all GML models with other load handling attachments available as accessories.

## DC-Series:



**Example: GML800+ 25/K DC**

The DC models are supplied with a detachable, self contained trolley which houses the batteries, charger and counterweights. Attaching and detaching the battery trolley is simplicity itself. Just tilt the trolley backwards, push it on to the two slide-on guides on the stabilising legs and secure with the two locking pins.

We estimate that under normal working conditions a full charge should be sufficient for a standard working days operation.

Obviously factors such as weight and lift cycles come into play however, it is possible to charge the batteries whilst the lift is in operation. The battery pack is fitted with a battery condition indicator and the charger is self seeking either 110 V or 230 V.

**Example: GML800+ 10/Std M**

Std stand for 'standard' which indicates a model without counterweights (stabilising legs forward facing). The M stands for manual winch. The 10 is the smallest model in the GML range with the highest safe working load of 1984 lbs up to 11 ft.

The length of the handle can be increased to make lifting heavier loads easier.

## M-Series:



**Systematic working - the Wienold GML makes it possible!**



The GML800+ is designed with several variants for maximum versatility.

### Two set up options:

1. **Std:** Standard model  
Forward facing stabilising legs. No counterweights required.
2. **K:** Counterweight model  
Stabilising legs positioned at the back. Counterweights required.  
Using stabilising legs forward facing is also possible.

### Three drive variants:

1. **AC:** mains operated electric winch ~230/110 V
2. **DC:** battery operated electric winch 24 V
3. **M:** manual worm gear

### Four lifting heights:

1. **10:** 11 ft. lifting height with 1984 lbs WLL
2. **15:** 16 ft. lifting height with 1873 lbs WLL
3. **20:** 21 ft. lifting height with 1873 lbs WLL
4. **25:** 25 ft. lifting height with 1763 lbs WLL

A variety of accessories are available to complement your working conditions.

The powered units can operate glass manipulators, telescopic booms and winches. By using the gearbox the which can be operated with a Cordless screwdriver or drill if a manual GML is being used.

Adjustable crane booms, fork extensions and adjustable pallet forks (short and long) are other options available.

The GML800+ offers exceptional safe working loads at a range of heights and enables comfortable, effortless, precise, quick and safe operation.



# Wienold Glass- und Material Lift GML 800+

Technical Data.

M series (manual worm gear winch)	GML800+/10/M	GML800+/15/M	GML800+/20/M	GML800+/25/M
Lifting height - Standard forks up:	11 ft	16 ft	21 ft	21 ft
Transport position - Height/Length/Width:	6.49/3.28/2.55 ft	6.49/3.28/2.55 ft	6.49/3.28/2.55 ft	6.49/3.28/2.55 ft
Working position - Height/Length/Width:	6.49/6.36*/2.55 ft	6.49/6.36*/2.55 ft	6.49/6.36*/2.55 ft	6.49/6.36*/2.55 ft
Working load limit (Load centre at 28 cm)**:	1984 lbs	1873 lbs	1873 lbs	1873 lbs
Weight of chassis + outrigger:	522 lbs	573 lbs	645 lbs	696 lbs
Weight of counterweights + box:	456 lbs	456 lbs	456 lbs	456 lbs

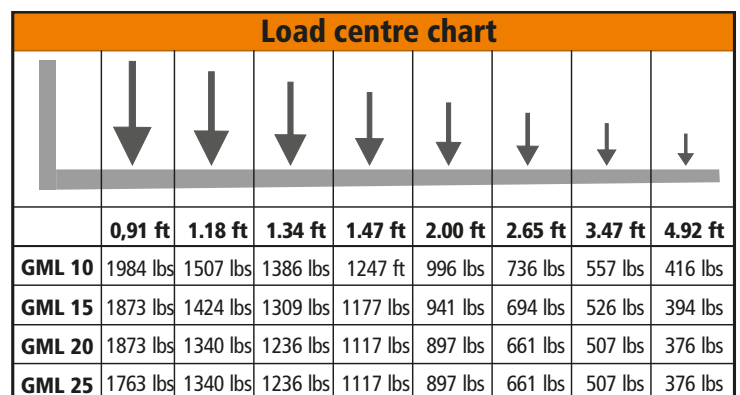
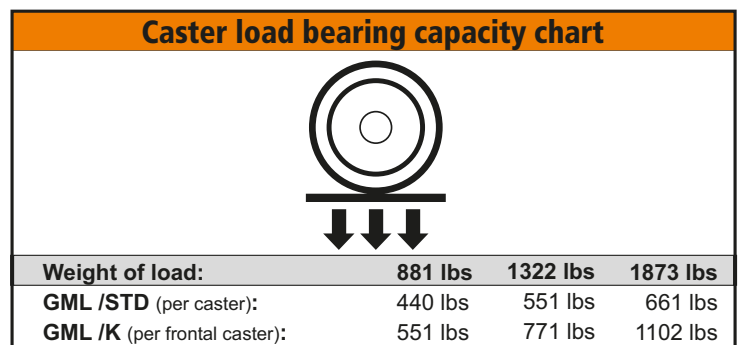
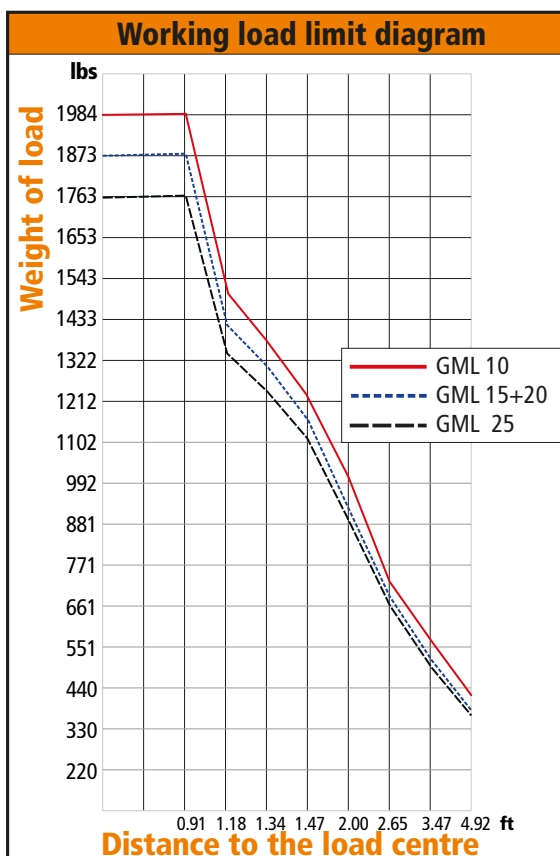
\* Stabilising legs positioned at the back. Stabilising legs forward facing: 6.52 ft. \*\* Without loading accessory.

AC series (~230V)	GML800+/10/AC	GML800+/15/AC	GML800+/20/AC	GML800+/25AC
Lifting height - Standard forks up:	11 ft	16 ft	21 ft	21 ft
Transport position - Height/Length/Width:	6.49/3.28/2.55 ft	6.49/3.28/2.55 ft	6.49/3.28/2.55 ft	6.49/3.28/2.55 ft
Working position - Height/Length/Width:	6.49/6.36*/2.55 ft	6.49/6.36*/2.55 ft	6.49/6.36*/2.55 ft	6.49/6.36*/2.55 ft
Working load limit (Load centre at 28 cm)**:	1984 lbs	1873 lbs	1873 lbs	1873 lbs
Weight of chassis + outrigger:	601 lbs	652 lbs	725 lbs	776 lbs
Weight of counterweights + box:	456 lbs	456 lbs	456 lbs	456 lbs
Drive: AC	Electric Winch: ~230 V / 110 V			

\* Stabilising legs positioned at the back. Stabilising legs forward facing: 6.52 ft. \*\* Without loading accessory.

DC series (24V Batteries)	GML800+/10/DC	GML800+/15/DC	GML800+/20/DC	GML800+/25DC
Lifting height - Standard forks up:	11 ft	16 ft	21 ft	21 ft
Transport position - Height/Length/Width:	6.49/3.28/2.55 ft	6.49/3.28/2.55 ft	6.49/3.28/2.55 ft	6.49/3.28/2.55 ft
Working position - Height/Length/Width:	6.49/6.36*/2.55 ft	6.49/6.36*/2.55 ft	6.49/6.36*/2.55 ft	6.49/6.36*/2.55 ft
Working load limit (Load centre at 28 cm)**:	1984 lbs	1873 lbs	1873 lbs	1873 lbs
Weight of chassis + outrigger:	601 lbs	652 lbs	725 lbs	776 lbs
Weight of battery wagon (counterweights incl.):	469 lbs	469 lbs	469 lbs	469 lbs
Drive: DC	2x 12 V / 105 AH. Charger: ~230V / 110V			

\* Stabilising legs positioned at the back. Stabilising legs forward facing: 6.52 ft. \*\* Without loading accessory.







# Wienold Lift Universal **PREMIUM**



## Wienold Lift Universal **L** **PREMIUM**

Owing to its small dimensions the WLU Premium can travel anywhere, in a versatile car, a small transporter and in a delivery van.

### The basic version (L):

Two long outriggers in front and a T-outrigger on the back. This variant, among other things, is ideal for work and assemblies directly at walls and ceilings, i.e.: heating installations, ventilation, air conditions and building of fairs. In combination with a window pane jack this model facilitates the installation of heavy panes, i.e.: when inserting panes into winter gardens.



## Wienold Lift Universal **K** **PREMIUM**

### The long Counterbalancer (K):

If you have to lift loads frontally, i.e.: at walls, over obstacles, then simply change the outriggers: short T-outrigger from back to front, the two long outriggers from front to back. Lastly attach the weight box - job done.

With a crane outrigger plus vacuum jack the assembly of heavy window panes and plates with smooth surface is also no problem.

More options and accessories on request.



## Wienold Lift Universal **Ks** **PREMIUM**

**Small strong aide:** The WLU PREMIUM short version in its working position requires less space without losing any pay load.

### The short counterbalancer (Ks):

The Shorty needs less space in working position without losing working load limit.

Everywhere where you find restricted space conditions it is favourably to equip the PREMIUM with short outriggers on both sides. Thus a utility space of only 3.47 x 2.46 ft. is sufficient.

Nine counterbalance weights ensure a WLL of 881 lbs also for the short version. So the „Shorty“ will be a strong colleague on your job side.



Technical Data	WLU-P /L PREMIUM 1.7	WLU-P /L PREMIUM 2.8	WLU-P /L PREMIUM 4.0	WLU-P /L PREMIUM 5.1
Lifting height - standard fork up:	5.57 ft	9.35 ft	13.12 ft	16.89 ft
Stowed - height:	5.51 ft	5.51 ft	5.51 ft	5.51 ft
- length:	2.06 ft	2.06 ft	2.06 ft	2.06 ft
- width:	1.64 ft	1.64 ft	1.64 ft	1.64 ft
Working position - height:	5.70 ft	5.70 ft	5.70 ft	5.70 ft
- length:	5.80 ft	5.80 ft	5.80 ft	5.80 ft
- width:	2.46 ft	2.46 ft	2.46 ft	2.46 ft
- ground clearance:	0.16 ft	0.16 ft	0.16 ft	0.16 ft
Loading height min.:	1.21 ft	1.21 ft	1.21 ft	1.21 ft
Working load limit:	881 lbs	881 lbs	881 lbs	793 lbs
Weight (without outriggers etc.):	213 lbs	249 lbs	284 lbs	319 lbs
Weight outriggers:	74 lbs	74 lbs	74 lbs	74 lbs



Technical Data	WLU-P /K PREMIUM 1.7	WLU-P /K PREMIUM 2.8	WLU-P /K PREMIUM 4.0	WLU-P /K PREMIUM 5.1
Lifting height - standard fork up:	5.27 ft	9.35 ft	13.12 ft	16.89 ft
Stowed - height:	5.51 ft	5.51 ft	5.51 ft	5.51 ft
- length:	2.06 ft	2.06 ft	2.06 ft	2.06 ft
- width:	1.64 ft	1.64 ft	1.64 ft	1.64 ft
Working position - height:	5.70 ft	5.70 ft	5.70 ft	5.70 ft
- length:	5.80 ft	5.80 ft	5.80 ft	5.80 ft
- width:	2.46 ft	2.46 ft	2.46 ft	2.46 ft
- ground clearance:	0.16 ft	0.16 ft	0.16 ft	0.16 ft
Loading height min.:	1.21 ft	1.21 ft	1.21 ft	1.21 ft
Working load limit:	881 lbs	881 lbs	881 lbs	793 lbs
Weight (without outriggers etc.):	213 lbs	249 lbs	284 lbs	319 lbs
Weight outriggers:	74 lbs	74 lbs	74 lbs	74 lbs
Counterbalance weights (6x 16kg):	211 lbs	211 lbs	211 lbs	211 lbs



Technical Data	WLU-P /Ks PREMIUM 1.7	WLU-P /Ks PREMIUM 2.8	WLU-P /Ks PREMIUM 4.0	WLU-P /Ks PREMIUM 5.1
Lifting height - standard fork up:	5.57 ft	9.35 ft	13.12 ft	16.89 ft
Stowed - height:	5.51 ft	5.51 ft	5.51 ft	5.51 ft
- length:	2.06 ft	2.06 ft	2.06 ft	2.06 ft
- width:	1.64 ft	1.64 ft	1.64 ft	1.64 ft
Working position - height:	5.70 ft	5.70 ft	5.70 ft	5.70 ft
- length:	5.80 ft	5.80 ft	5.80 ft	5.80 ft
- width:	2.46 ft	2.46 ft	2.46 ft	2.46 ft
- ground clearance:	0.16 ft	0.16 ft	0.16 ft	0.16 ft
Loading height min.:	1.21 ft	1.21 ft	1.21 ft	1.21 ft
Working load limit:	881 lbs	881 lbs	881 lbs	793 lbs
Weight (without outriggers etc.):	213 lbs	249 lbs	284 lbs	319 lbs
Weight outriggers:	57 lbs	57 lbs	57 lbs	57 lbs
Counterbalance weights (9x 16kg):	317 lbs	317 lbs	317 lbs	317 lbs



**Norbert Wienold GmbH**  
**Material- und Personenlifte**

Industriegebiet Waldstr. 35 a  
D-48488 Emsbüren  
Germany

Phone +49 59 03 - 93 94-0  
Fax +49 59 03 - 93 94-50  
eMail: [info@wienold-lifte.de](mailto:info@wienold-lifte.de)

**Wienold** -LIFTE .de



Technical changes, errors and misprint reserved. 07/16  
Release 2.2 vom 22.07.16

Authorized Distributor:



Rental Stations\*: München | Frankfurt | Leverkusen | Walsrode | Brandenburg | Emsbüren

\*Only aluminium lifts.